

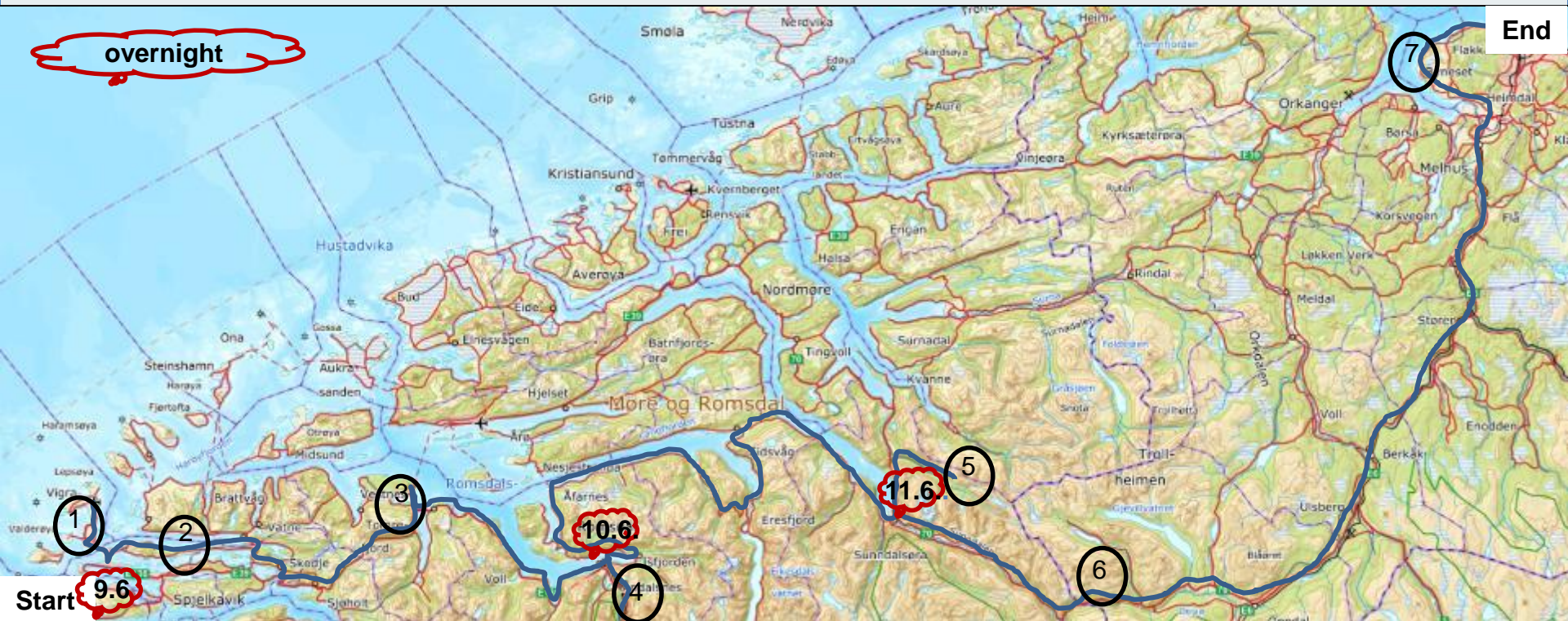
NORDQUA excursion:

# Quaternary geology and its influence on rockslide activity, in northwestern and mid part of Norway

June 9-12, 2020

Reginald Hermanns, Paula Hilger, Eiliv Larsen, Inger-Lise  
Solberg and John-Inge Svendsen



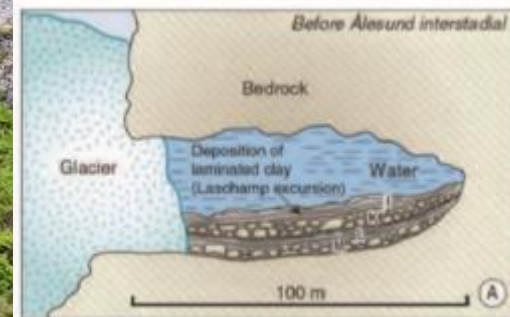
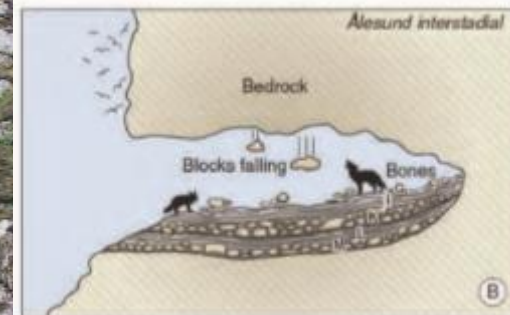
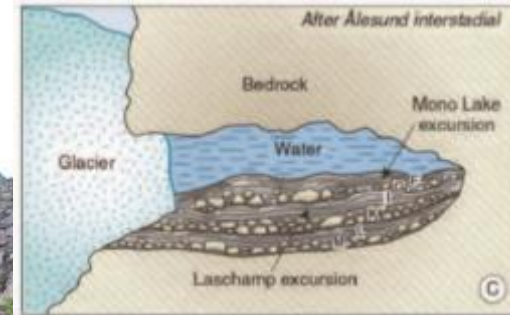




# Skjonghelleren, coastal cave

Unique glacial – interstadial record

Rich Ice Age fauna



# Skorgenes – stacked deltas

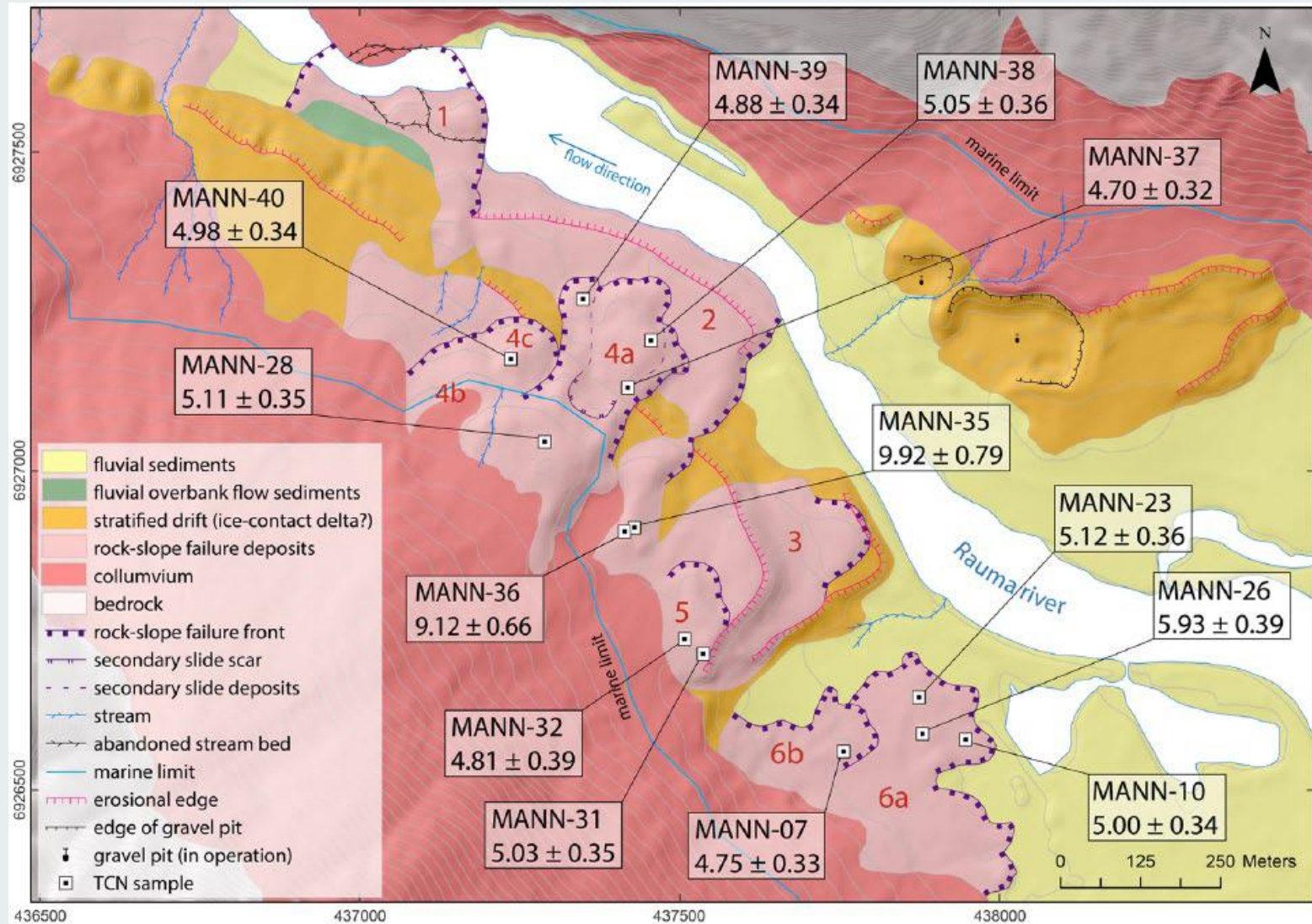
Both unique and typical



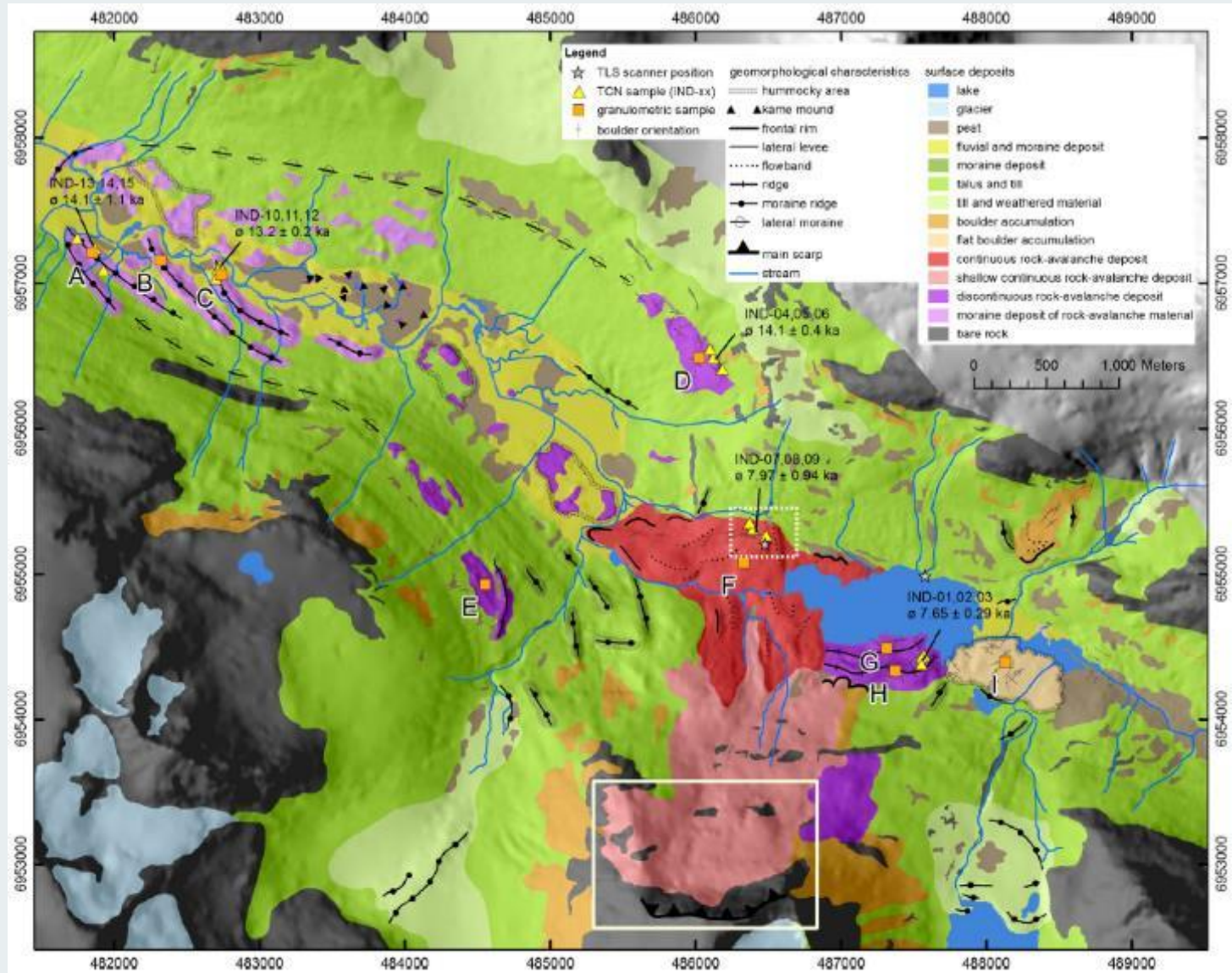
SKORGENES				SKJONGHELLEREN		INTER- PRETATION	
UNITS	DATES , TL OSL ka	U/Th		BEDS			
		8 7 6	41 73	10.3 11.5	8.5	B C-D-E	o o o o
5				HIATUS		ICE-COVER	
4			28-30 (Pal. mag)	F			
3	73	39	29.6 27.9 32.8 29.9 32.0	G H	o o o o o o o o	ICE-FREE	
2			42 (Pal. mag)	HIATUS 7 HIATUS		ICE-COVER	
1		63 51	28	55.0	K	o o o o o o o o o o o o	ICE-FREE
					L		ICE-COVER
					H	o o o o o o o o o o o o	ICE-FREE



# Mannen – a Late Pleistocene/Holocene History of rock slope instability and failures



# Innerdalen – Rock slope failures on a retreating ice body





# Byneset – Quick clay slide history and the January 1<sup>st</sup>, 2012 event



The excursion will be made a Master- and PhD course from the University of Bergen, and we hope to have a good mix of students and professionals attending.

Information about registration, travel, costs etc. will be announced later. For now, set aside the dates June 9-12, 2019 for a scenic and scientifically interesting excursion with friends and colleagues. We hope to see as many as possible of you in June.

